

嘉禾登科技



嘉禾登科技有限公司

23557 新北市中和區中山路二段348巷4號2樓

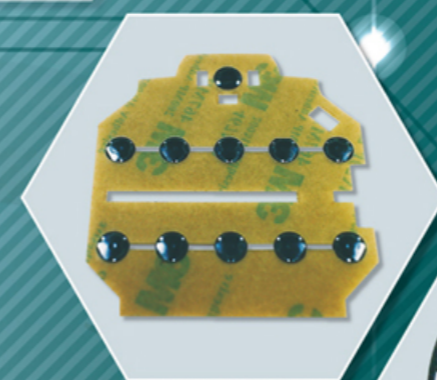
TEL:+886-2-2249-4282

+886-2-2249-4304

FAX:+886-2-2249-4359

Http://www.bondtec.com.tw

E-mail:bondtec.com@msa.hinet.net



- Membrane switches
- Nameplates
- Rubber Keypads
- Printed Circuit Board
- Flexible Printed Circuit
- Dome Array
- Other services

BONDTEC.

BONDTEC TECHNOLOGY CO., LTD.

嘉禾登科技有限公司自2000年創立至今，
一直從事薄膜按鍵以及其他相關的領域，擁有多年且豐富的經驗，
我們秉持著專業、誠信和服務為我們的核心理念，
我們始終將依客戶的需求為優先。

Bondtec has been in the membrane switch business since 2000,
owns several patents in the field, and is ISO 9001:2015 certified.

At Bondtec, expertise, integrity and service comprise our core values,
and we always strive to put our customers' needs above all.

- 2000年公司成立
Company Was Established

- 2003年設立生產線
Set up Production Line

- 2005年取得ISO 9001:2008認證
Received ISO 9001 : 2008 Certification

- 2008年參與醫療器具的研發
Involved in The Development of Medical Instruments

- 2009年擴大廠房至200坪
Expand The Plant (7000 ft²)

- 2012年提升模組化設計生產能力
Applied Modular Design Principles to Enhance Production Capacity

- 2013年擴大廠房至300坪
Expand The Plant (10700 ft²)

- 2015年追求國際化銷售及服務
Expanded to The International Market

- 2016年取得ISO 9001:2015認證
Received ISO 9001 : 2015 Certification

- 2017年擴大廠房及辦公室
Expand Plant and Office (11500 ft²)



我們不斷創新、改進及突破我們的設備和專業能力，以在不影響產品品質的
前提下實現效率最大化並降低成本。只為了創造我們與客戶雙贏的局面，
這也是我們在領域內的競爭優勢。

我們主要提供電子零件，如薄膜開關，銘牌，橡膠鍵盤，
軟性印刷電路板和印刷電路板等。

然而我們的產品所能運用的領域也是極為廣泛的，如工業等級按鍵、
醫療產業、視聽音響設備、健身器材、軍事器材、POS系統、
自動化設備和汽車工業諸多領域等等。

我們並不拘限於產品的生產或者代工，我們更是能夠提供客戶
系統整合、專案製作和產品設計的服務。

我們漸漸地擴大到台灣以外的國際市場，現階段與美國、
烏克蘭、香港、日本等等的各國公司皆有合作。

In fact, we constantly innovate and improve our equipments and
skills in order to maximize efficiency and to lower costs
without sacrificing product quality.

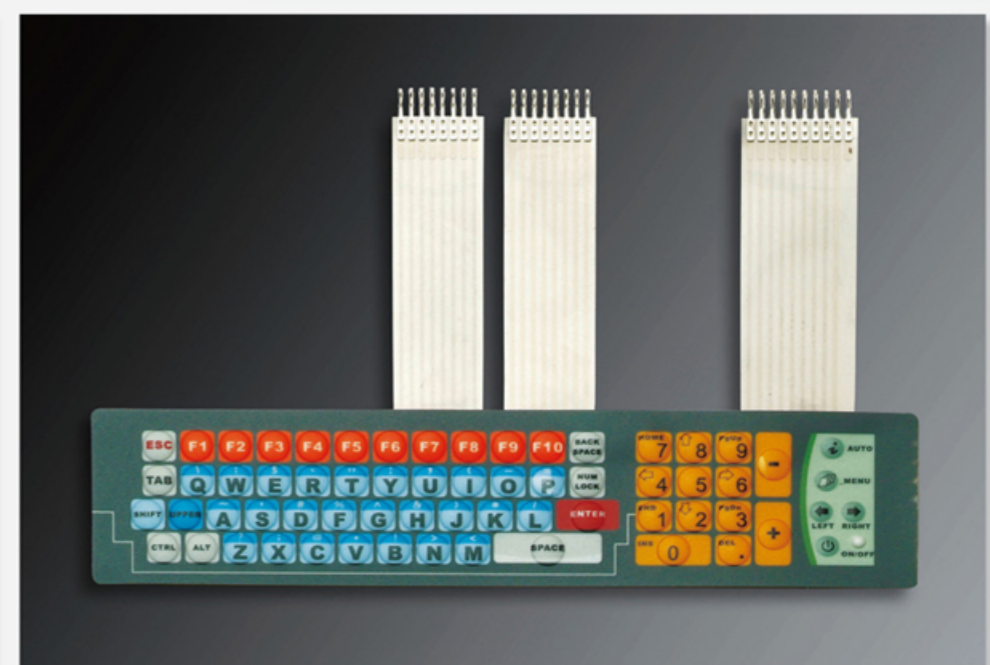
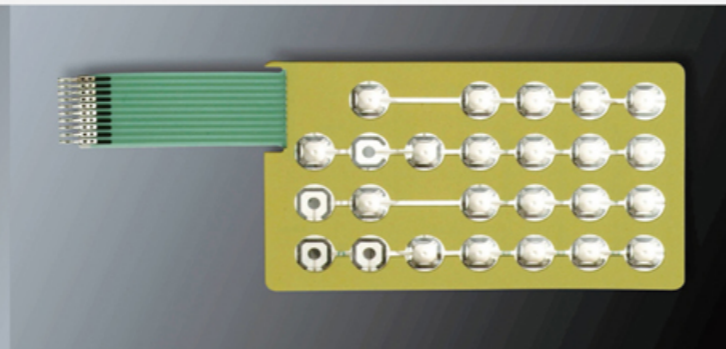
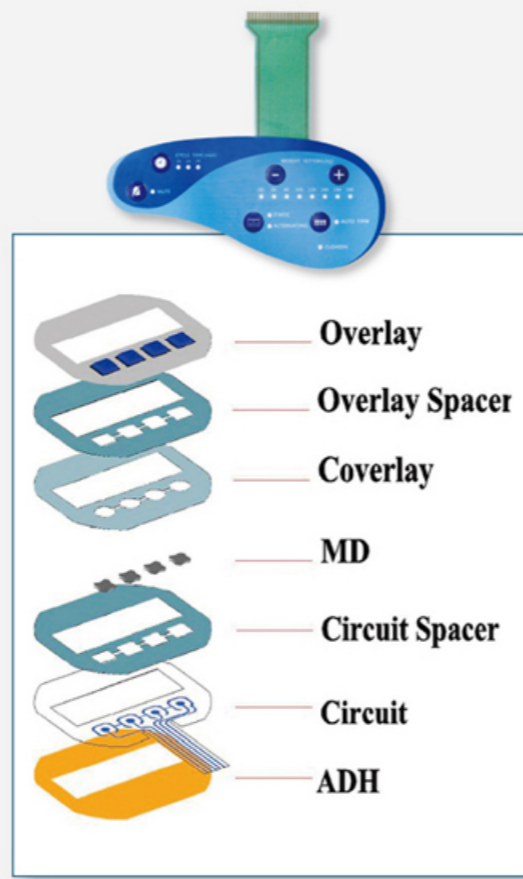
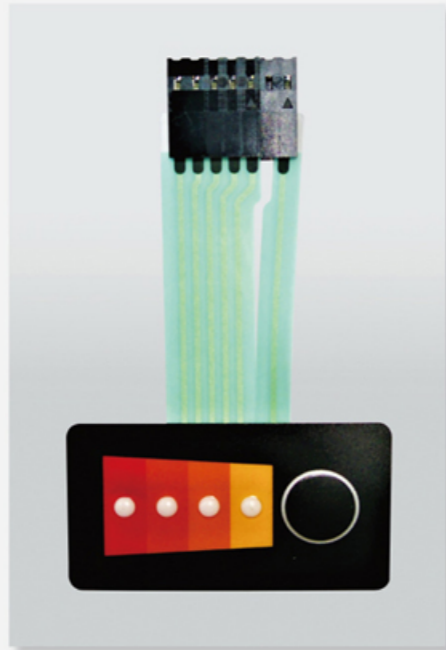
This creates a win-win situation for both parties, and ultimately
grants us a competitive edge in the industry.

We supply components of everyday household electronics such as
membrane switches, nameplates, rubber keypads,
flexible printed circuits (FPC) and printed circuit boards (PCB), etc..
Aside from that, our products are also used in medical apparatus
(e.g. laser scalpels, blood glucose meters, etc.),
industrial machineries and other disposable electronic devices.

Our strict adherence to environmental and safety standards,
and SGS regulated raw materials ensures our end products
to be safe and non-toxic for both human use
and the environment.

Gradually, we're expanding beyond Taiwan into the
international market, and
have since cooperated with producers from America, Ukraine,
Hong Kong, and Japan to name a few.

- 低成本 / Cost-efficient
- 輕薄且耐用 / Thin, Durable, Lightweight and Compact
- 防刮、防水和防油 / Water, Scratch and Oil Resistant
- 易於組裝 / Easy to assemble
- 客製化 / Customizable



Electrical

電路等級 Maximum circuit rating	35V(DC)100mA 1W
接觸電阻 Contact resistance	10Ω-500Ω (Depending on trace length & material used).
絕緣阻值 Insulation resistance	100MΩ at 100V DC
介質耐壓 Dielectric withstand	250 V Rms (50-60 Hz 1 min.)
觸點抖動時間 Contact bounce	≤ 5ms
使用壽命 Life expectancy	Flat type ≥ 5,000,000 times
	Metal Dome ≥ 1,000,000 times
	Mylar Dome ≥ 2,000,000 times

Mechanical

操作壓力 Actuation force	Flat type = 60 to 300 g (2 to 10 oz)
	Tactile type = 180 to 400 g (6 to 14 oz)
開關行程 Switch stroke	Flat type = 0.1 to 0.5mm
	Tactile type = 0.6 to 1.5mm

Environmental

操作溫度 Operating Temperature	Flat type / Metal Dome type : -40°C to +80°C
	Poly Dome : -20°C to +55°C
儲存溫度 Storage Temperature	Flat type / Metal Dome type : -40°C to +85°C
	Poly Dome : -40°C to +60°C
濕度 Humidity	40°C, 90% - 95% for 240 hrs
振動 Vibration	20 G's0 max (10-200 Hz, MIL-STD-202, M204, Condition B)

- 多樣化的應用程序 / Diverse application
- 不同的表面處理 / Different surface treatments
- 使用環保油墨 / Uses environmentally friend ink

- 環保且無毒 / Environment-friendly and non-toxic
- 質地柔軟、觸感佳 / Soft texture
- 可以透光 / Can be backlit
- 使用壽命長 / Better life expectancy



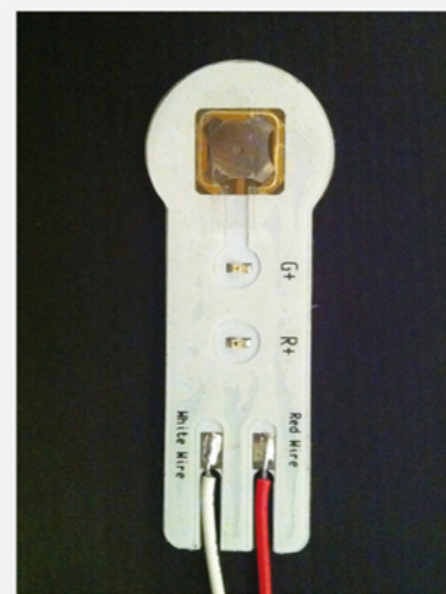
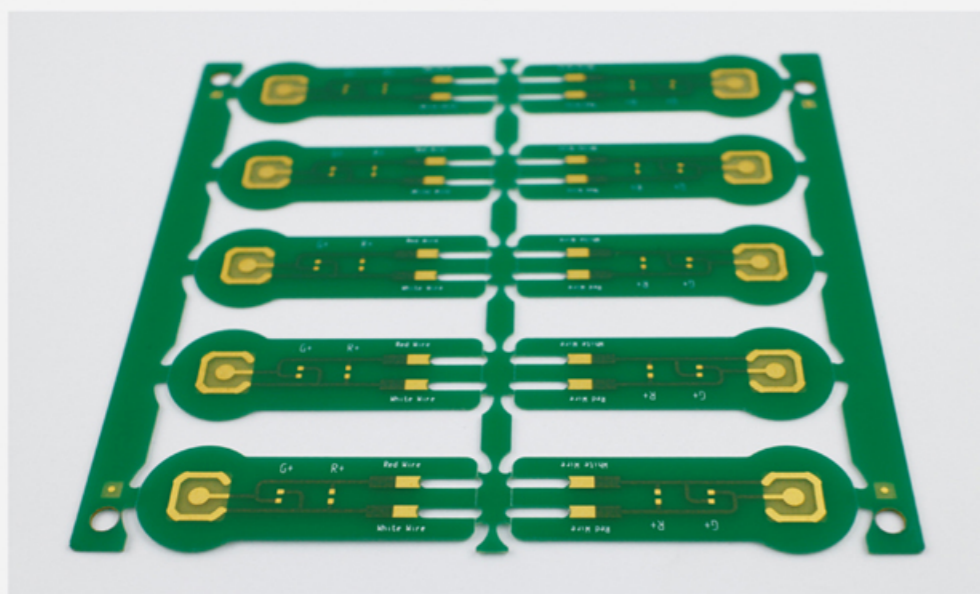
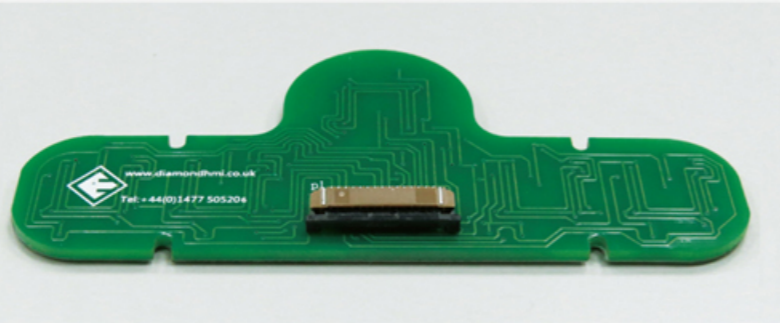
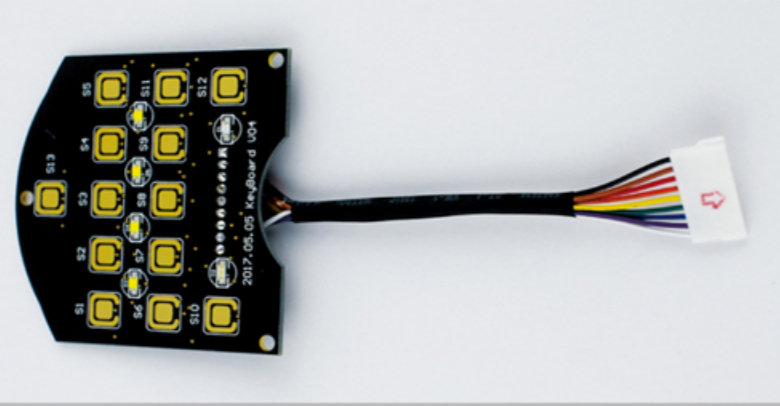
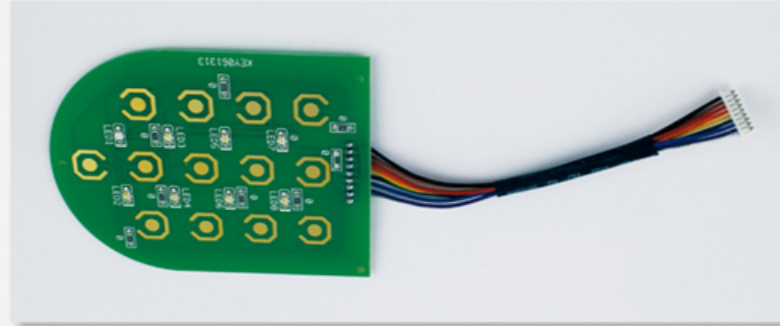
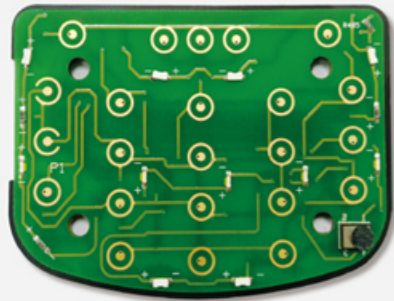
操作壓力範圍 Actuation Force	20-350g
電路等級 Maximum Circuit rating	100mA at 24VDC
觸點抖動時間 Contact Bounce	< 小於10ms
絕緣抗阻 Insulation Resistance	Greater than 100 Mega-ohm at 250 V DC
使用壽命 Life expectancy	100-500 萬次, 依結構不同而變化 1-5 million times, depending on the structure
操作溫度 Operating temperature	-40°C~+150°C
儲存溫度 Storage temperature	-40°C~+150°C





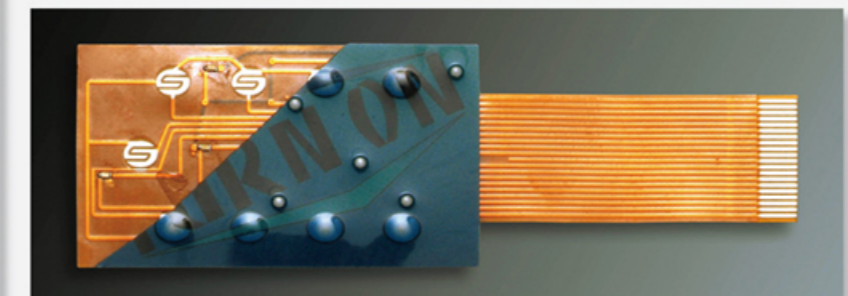
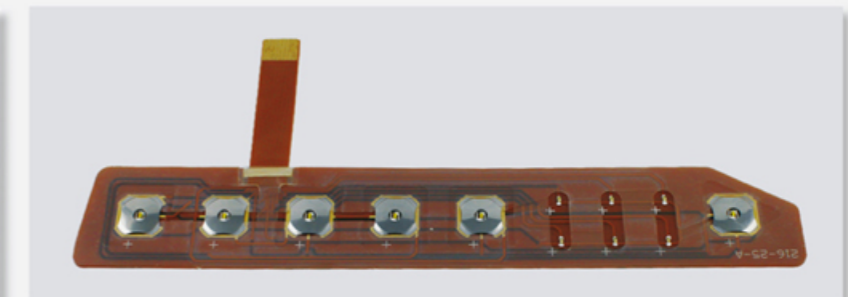
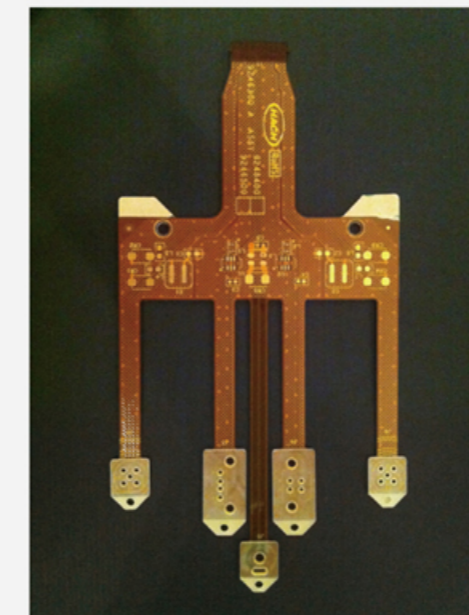
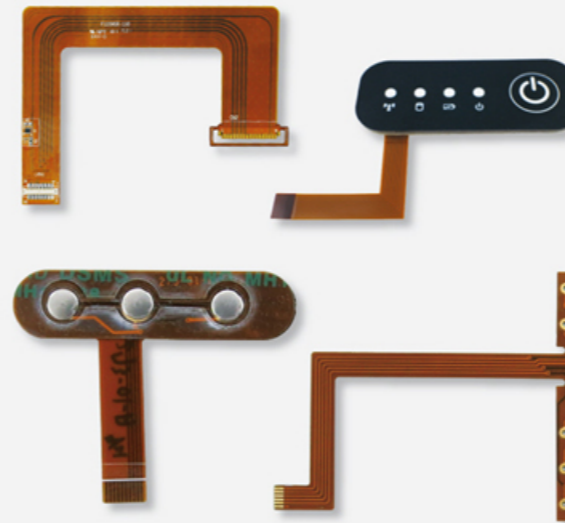
印刷線路板 (PCB)

- 成本低 / Cost-efficient
- 堅固且耐用 / Strong and sturdy
- 穩定性高 / High-stability
- 精密度高 / High-precision



軟性線路板 (FPC)

- 輕、薄且柔軟 / Lightweight, thin and flexible
- 耐高溫 / Can withstand to high temperature
- 耐彎曲 / Resistant to bending
- 抗干擾 / Anti-interference

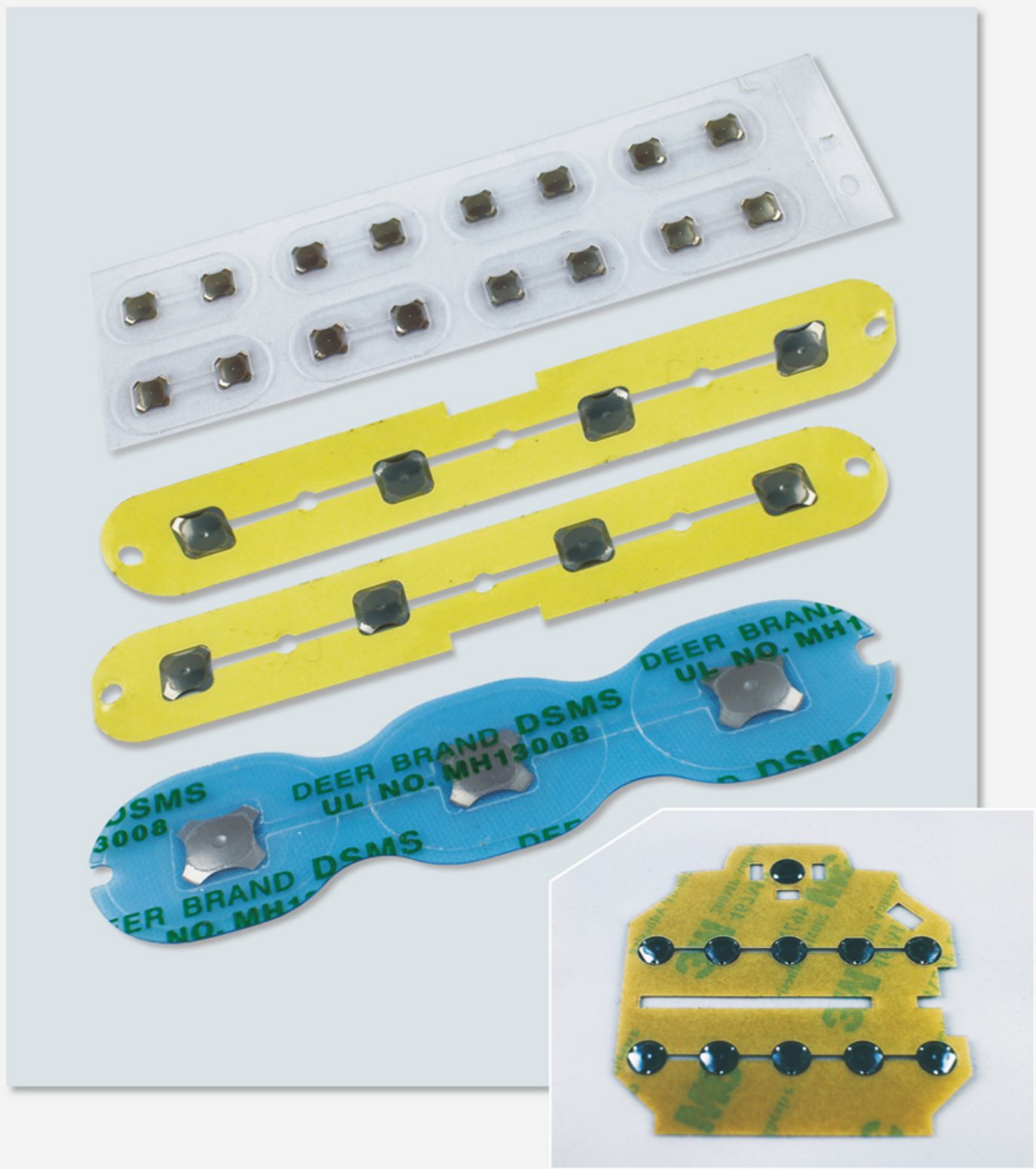


基材 Base material	PI、PET
銅箔厚度 Thickness of base copper	18 μm/35 μm (標準厚度)
最大單片產品尺寸 Max panel size	單面板 (single) - 550mm x 250mm 雙面板 (double) - 500mm x 250mm
鑽孔最小孔徑 Min hole diameter of drilling	0.15mm / 6mil
沖孔最小孔徑 Min hole diameter of punching	0.5mm / 20mil
最小線寬/最小線距 Min trace width/Min space	0.075mm (3mil)
抗剝強度 Peel strength	1.0kg.f /cm
多層板 Multi-layers	最多 4 層 Max 4 layers
被動元件 Passive component	Min. 0201
連接器 Connector	Min. Pitch 0.3mm
補強片 Stiffener	PI, PET, FR4, Metal
焊接溫度 Solder heat temp	PI : 280°C PET : 243°C
表面處理 Surface heat temp	電鍍鍍金 (Gold plating) : 1 μm~10 μm 化學鍍金 (Immersion Gold) : 1 μm~5 μm OSP有機保焊劑 化錫 (Immersion Tin) : 2 μm~40 μm 鍍錫 (Tin plating) : 200 μm~1000 μm
尺寸公差 Dimension of tolerances	線寬 (Conductor Width) : ±0.03mm~±0.05mm 外型尺寸 (Outline Dimension) : ±0.1mm 覆蓋膜偏移 (Apply Coverlay Tolerance) : ±0.3mm 孔徑誤差 (Hole Diameter) : ±0.1mm



Dome Array 彈片貼片

- 本產品可直接貼合於印刷線路板(PCB)、軟性線路板或其他線路上，作為導通和觸發的開關使用。
- This product can be directly attached to PCB, FPC or other circuits, and used as an on and trigger switch.



Other Services

其他業務

- 沖型加工：各式膠類、泡棉類、導電導熱類及塑料墊片等等的沖型加工。
- All kinds of plastic, foam, thermal and electrical conductors and plastic gaskets and other punching and molding processes.

